



The Ultimate in Boating Pedestals

ALUMINIUM RANGE



www.marinetechindustries.com.au

INNOVATION NOT IMITATION

As a proud Australian manufacturer, Marine Tech Industries Australia Pty Ltd manufactures products that compete favourably with our competitors in both Australia and around the world. The products we manufacture are of the highest quality, and reflect value for money. While competitive pricing is important, we believe the quality of our products backed by the excellent service and experience offered by our team, is invaluable to our customers.

We have invested heavily over the years in research and development to ensure all of our products will perform as expected, even in the most demanding conditions. While we offer an extensive product range, we also have an in-house design team that can work with you to help design new products to suit your requirements. Our experience in this area will ensure that the product not only looks good, but will continue to exceed your expectations.

At Marine Tech Industries Australia Pty Ltd, our motto is "Innovation not Imitation". We are constantly looking to design and develop new products that will increase the enjoyment and comfort levels of your boating experience. Regardless of the type and size of your boat, we are sure to have a product in our range to suit your requirements. If not, let us create for you something specifically suited to your individual needs.



Aluminium Softrider Pedestal

Aluminium Softrider Pedestal

The Softrider is the ultimate in Marine Pedestals. With the assistance of a gas powered cylinder incorporated inside the Pedestal, it helps to absorb the harshness of offshore boating. When the Softrider is fitted with a swivel lock, manual slider or powerslider, it incorporates the unique feature of height adjustment. By lifting the Softrider handle up, the Pedestal can be raised and lowered up to 100mm (4") to select the height that is just right. When the handle is released, the Pedestal is locked in that position, all while still maintaining the Softrider feature. The handle can be set on either the left or right side of the Pedestal. The specified height of the Pedestal includes the swivel/slider. Loading is not to exceed 115kgs (this is including chair). Heavy gas springs available for larger loadings.

CODE: SR





Aluminium Sofrider Pedestal Options



Swivel Lock

The Composite Swivel Lock Flanges are designed to fit our range of Sofrider Pedestals. It swivels 360°, the clamp is lockable in any position and incorporates the Sofrider adjustment handle.

CODE: SLCH



Manual Slider

The Manual Slider is fitted to the Composite Swivel Lock Flange for the Sofrider Pedestal and allows you to manually move the chair forward and aft 100mm (4"). The position is located by activating the spring loaded plunger.

CODE: MSCH



Powerslider

The Powerslider is fitted to the Swivel Lock Flange and allows you to move your chair forward and aft 100mm (4"). This is unique because all you have to do is push the Powerslider lever back and the chair automatically moves forward and with a little assistance, will slide back. As soon as you release the lever the slider will lock in that position.

CODE: PSCH



Footrest

The Footrest is cast in Aluminium and has the distinctive feature of being spring loaded. It can be clamped to the Sofrider, Fixed Pedestal or any 75mm tube. When the footrest is not in use, it folds back against the Pedestal giving the maximum amount of space between the Pedestal and the Helm Station.

CODE: FR

Aluminium Fixed Pedestal & Options



Aluminium Fixed Pedestal

The Fixed Pedestal is made from marine grade Aluminium extrusion, which gives excellent non-corrosive protection. The Fixed Pedestal is designed for maximum stability with a specially designed base casting, into which the Aluminium tube is pressed. A bond is then formed between the Aluminium tube and the base casting. Available in a full range of heights to suit your requirements.

CODE: FP



Swivel Lock

The Swivel Lock Flanges are designed to fit our range of Fixed Height Pedestals. It swivels 360° and is clamp lockable in any position.

CODE: SLC



Manual Slider

The Manual Slider is fitted to the Composite Swivel Lock Flange and allows you to manually move the chair forward and aft 100mm (4"). The position is located by activating the spring loaded plunger.

CODE: MSC



Powerslider

The Powerslider is unique. It is fitted to the Swivel Lock Flange & allows you to move your chair forward and aft 100mm (4"). All you have to do is push the Powerslider lever back and the chair automatically moves forward and with a little assistance, will slide back. As soon as you release the lever, the slider will lock in that position.

CODE: PSC

Aluminium Low Level Options



Low Level Pozielock Swivel

Low Level Pozielock Swivel can be secured to any Fibreglass or Aluminium box type Pedestal. This product incorporates a locking system that ensures your safety. The Pozielock swivel allows the user to lock the swivel at 90° intervals.

CODE: LLSL



Low Level Manualslider With Pozielock Swivel

Low Level Manual Slider with Pozielock Swivel can be secured to any Fibreglass or Aluminium box type Pedestal. This product incorporates a locking system that ensures your safety. The Pozielock swivel allows the user to lock the swivel at 90° intervals.

CODE: LLMSSL



Low Level Powerslider With Pozielock Swivel

Low Level Powerslider with Pozielock Swivel which can be secured to any Fibreglass or Aluminium box type Pedestal. This product incorporates a locking system that ensures your safety. They Pozielock swivel allows the user to lock the swivel at 90° intervals.

CODE: LLPSSL

Aluminium Table Pedestals & Options

Aluminium Fixed Tables

The Fixed Table Pedestal has a standard height of 700mm or customized heights to suit the application. The Fixed Table Pedestal has a 200mm square plate fitted to the tube to support the Table top. All tables can be fitted with a Table Slider.

CODE: FT



Table Slider

The Table Slider has a travel of 300mm and is an option for all Tables. This slider adds 30mm to the Table height.

CODE: TS300



Aluminium Adjustable Table Pedestals

The Adjustable Table Pedestal is gas spring assisted to raise the Table as required with heights ranging from 300mm to 750mm. The Adjustable Table comes in two models, the floor mounted Table Pedestal adjusts from 400mm to 700mm and the under floor Table Pedestal can be customized on application, depending on the clearance under the floor. All tables can be fitted with a Table Slider.

CODE: ADJ



Folding Leg

The folding leg is designed to fold away at 90°. It is ideal for fold down tables, benches and bait boards. The leg tube is 25mm in diameter and is available in anodized aluminium or stainless steel. The height can be made to suite your requirements.

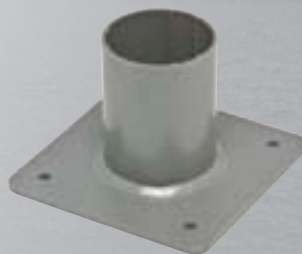
CODE: FTL



Low Level Swivel

Low Level Swivel can be secured to any Fibreglass or Aluminium box type Pedestal. This Swivel is a friction swivel only and is manufactured from high tensile aluminium plate.

CODE: LLSW



Low Profile Pedestal

Designed to fit onto existing Fibreglass or Aluminium box type Pedestal. The Pedestal can be fitted with a choice of Powerslider, Manual Slider or Swivel Lock from our Fixed Pedestal range. The overall height is 165mm.

CODE: LP





Helm Seating Options For Aluminium Pedestals



Helmsman Commander Seat

The Helmsman Commander Seat is designed for long lasting comfort and exceptional durability. It features 25mm Stainless Steel tubing for extra strength, a 3mm solid Stainless Steel base plate and premium moulded foam. This chair can be upholstered in a full range of colours and trims.



Helmsman Deluxe Seat

The Helmsman Deluxe Seat is part of our range of stainless steel deluxe seating. It has a Stainless Steel frame for strength and durability, features fixed upholstered arms and is available in a full range of colours. The width is 590mm, height is 500mm and depth is 550mm.



LB11 Bolster Seat

The LB11 Bolster Seat has a moulded frame for both strength and durability. It has a unique feature in that the front bolster can be lifted up and leant against for support when driving your boat standing up in poor conditions.



LB9 Seat

The LB9 Seat is an extremely popular choice for use in most types of boats. The fully upholstered moulded frame offers excellent comfort and long service life.



Skipper Elite Seat

In addition to its moulded frame and marine grade vinyl upholstered cushions, the Elite has moulded grab handles for extra comfort and support during those extended periods on the water.



Skipper Challenger Seat

This seat incorporates a moulded frame able to withstand the demanding marine environment. It is padded with high density foam for extra comfort and is available in a wide colour range of marine grade vinyls.



Skipper Deluxe Seat

This seat incorporates a moulded frame able to withstand the demanding marine environment. The high quality cushions for the seat and back can be removed for cleaning or for safe storage when not in use.



LB5 All Purpose Seat

The LB5 All Purpose Seat is designed to fit both our Aluminium and Stainless Steel Pedestals. This chair can be upholstered in a full range of colours and trims.



Marine Tech Industries Australia Pty Ltd

Marine Tech Industries offers the boating industry an extensive range of top quality pedestals, table systems and seats. We have combined the latest technology & materials to bring you a product that is durable, comfortable & stylish. On the water it's the quality & performance that counts & our Sofrider system is the ultimate in boating pedestals.



Factory 3, 209 Liverpool Road Kilsyth, Victoria, Australia 3137
Tel: 1300 300 089 International: +61 (3) 9761 9322
Email: sales@marinetechindustries.com
www.marinetechindustries.com.au

Distributed by