



The Ultimate in Boating Pedestals – Seating and Table Systems

STAINLESS STEEL RANGE

VOYAGER
AOLVWPEK

BRIDGEMASTER
BKIDGCIAlVZLEK

HERCULES
HERKCIAlVZLEK



MARINE TECH
INDUSTRIES

www.marinetechindustries.com.au

STABILITY, DURABILITY, STYLE & COMFORT

A proudly Australian owned business, Marine Tech Industries Australia Pty Ltd designs, manufactures and distributes product that compete favourably with our competitors in both Australia and around the world. Their products are manufactured to the highest quality.

While competitive pricing is important, they believe the quality of their products backed by excellence in customer service and decades of experience, is invaluable to customers.

They have invested heavily over the years in research and development to ensure all products will perform as expected, even in the most demanding conditions. Experience in this area will ensure that the product not only looks good, but will continue to exceed your expectations.

At Marine Tech Industries, their motto is "Innovation not Imitation".

They are constantly looking to design and develop new products that will increase the enjoyment and comfort levels of your boating experience. Regardless of the type and size of your boat, Marine Tech Industries are sure to have a product in their range to suit your requirements. If not, let them create for you something specifically suited to your individual needs.



Luxury Helm Seating Systems

Voyager Elite Helm Seat (With Headrest)

The Voyager Elite Helm Seat incorporates an adjustable headrest a reclining backrest and lift up arms for ease of access. It is constructed using the latest materials to bring you a seat that is durable, comfortable and stylish.

Key Points:

- Moulded foams
- Adjustable head rest
- Adjustable armrests
- Reclining back rest
- 316 stainless steel frame

Options include:

- Vinyl or Leather
- Series I or Series II upholstery
- Footrest, pedestal or plinth mounted

CODE: MTIA-VE



Series II Upholstery

Voyager High Back Helm Seat

The Voyager High Back Helm Seat incorporates a reclining backrest and lift up arms for ease of access. It is constructed using the latest materials to bring you a seat that is durable, comfortable and stylish.

Key Points:

- Moulded foams
- Adjustable armrests
- Reclining back rest
- 316 stainless steel frame

Options include:

- Vinyl or Leather
- Series I or Series II upholstery
- Footrest, pedestal or plinth mounted

CODE: MTIA-V



Series II Upholstery

VOYAGER



Voyager Low Back Helm Chair

The Voyager Low back Helm Seat incorporates a reclining backrest and lift up arms for ease of access. It is constructed using the latest materials to bring you a seat that is durable, comfortable and stylish.

Key Points:

- Moulded foams
- Adjustable armrests
- Reclining back rest
- 316 stainless steel frame

Options include:

Vinyl or Leather
Series I or Series II upholstery
Footrest, pedestal or
plinth mounted

CODE: MTIA-VLB



Series II Upholstery

Voyager Low Back Twin Helm Seat

The Voyager Low back Twin Helm Seat incorporates a reclining back-rest and lift up arms for ease of access. It is constructed using the latest materials to bring you a seat that is durable, comfortable and stylish.

Key Points:

- Bench Style or Twin Bucket
- Moulded foams
- Adjustable armrests
- Reclining back rest
- 316 stainless steel frame

Options include:

Vinyl or Leather
Series I or Series II upholstery
Footrest, pedestal or
plinth mounted

CODE: MTIA-VLB-THS



Series I Upholstery

Series II Upholstery

VOYAGER
LOW BACK



Stainless Adjustable & Fixed Helm Seat Pedestals



Stainless Low Profile Helm Pedestal

Key Points:

- 316 Stainless
- Pedestal shown with Swivel Lock (SFPSL)
- Fit a stainless slider
- Fit a Voyager helm seat
- Fit your own helm seat
- Polished to a mirror finish

CODE: SFP100-150 & SFPSL



Stainless Fixed Helm Pedestal

Key Points:

- 316 Stainless
- Pedestal shown with Swivel Lock (SFPSL)
- Fit a stainless slider and footrest
- Fit a Voyager helm seat
- Fit your own helm seat
- Height can be customised
- Polished to a mirror finish

CODE: SFP100-700 & SFPSL



Stainless Adjustable Helm Pedestal

This pedestal has a gas spring assist height adjustment of 200mm and can be locked in any position throughout its travel.

Key Points:

- 316 Stainless
- Pedestal shown with Swivel Lock (SFPSL)
- Fit a stainless slider and footrest
- Fit a Voyager helm seat
- Fit your own helm seat
- Height can be customised
- Polished to a mirror finish

CODE: SADJH & SFPSL



Stainless Softrider Elite Pedestal

The Softrider Elite Pedestal takes the bumps out of your ride with its shock mitigating and height adjustable gas spring. Available in three height options 600mm, 700mm and 750mm.

Key Points:

- 316 Stainless
- Fit a stainless slider and footrest
- Fit a Voyager helm seat
- Fit your own helm seat
- Height can be customised
- Polished to a mirror finish

CODE: SSRE



Stainless Pedestal Options



Elite Electric Slider

The Electric Slider has the fore and aft system adjusted electrically. It has up to 150mm travel and is compatible with the full range of Marine Tech Industries stainless pedestals including the Softrider Elite.

CODE: SSRES



Manual Slider with or without Footrest Mounts

The Manual Slider has 150mm of fore and aft travel it is lockable in any position and has footrest mounts ready to fit an optional footrest. It is compatible with the full range of stainless fixed, adjustable and Softrider helm seat pedestals.

CODE: SSRMS or SSRMFS
(Softrider option)
CODE: SMS or SMSFM



Voyager Plinthslider 400

The stainless steel Plinthslider is another unique product from Marine Tech Industries. Its 400mm travel allows you to keep the companionway clear in front of the helm station doing away with expensive or unstable floor rails.

CODE: VPLMS400



Voyager Pedestal Footrest

The footrest mount is compatible with the full range of Voyager helm seats and stainless steel pedestals. It is available with or without the timber inlay.

CODE: VFRW



Stainless Pedestal Swivel Lock

The Stainless Pedestal Swivel Lock is designed to fit the adjustable, fixed and low level pedestals. Complete with an acetyl bush for smooth operation. It can be locked in any position.

CODE: SFPSL



Twin Helm Slider

The Twin Helm Slider is unique to Marine Tech Industries it allows you to mount two helm seats side by side, mount a bench type seat or Voyager Twin Helm Seat.

CODE: SSTHS

BRIDGEMASTER
BRIDGE & YACHT EQUIPMENT

Leading The Way In... STABILITY & DURABILITY



Stainless Table Solutions – Fixed – Adjustable – Electric

Stainless Fixed Table System



The Stainless Fixed Table Pedestal has a standard height of 700mm or can be custom built to suit your requirements. The picture shown has an optional removable table swivel top (STSL).

Key Points:

- 316 Stainless
- Tube sizes 76, 100, 127, 150, 200 and 250mm
- Standard height 700mm
- Top plate 200mm square
- Mirror polished
- Bearing weight 35kg
- Fit a table slider
- Fit a removable top

CODE: SFT & STSL

Stainless Adjustable Table Pedestal



Gas spring assisted Stainless Steel Adjustable Table available in various tube sizes combinations. The table pedestals can be mounted individually or in pairs depending on requirements.

Key Points:

- 316 Stainless
- Tube sizes 76/100mm, 100/127mm, 127/150mm
- Extended height 700mm
- Lowered height 400mm
- Travel 300mm
- Top plate 200mm square
- Mirror polished
- Gas spring assist
- Bearing weight 25kg
- Fit a table slider

CODE: SADJ

Stainless Triple Stage Table Pedestal



Gas spring assisted Stainless Triple Stage Pedestal. The height can be customized to suit your requirements. The table pedestals can be mounted individually or in pairs depending on requirements.

Key Points:

- 316 Stainless
- Tube sizes 100/127/150mm 76/100/127mm
- Extended height 700mm
- Lowered height 330mm
- Travel 370mm
- Top plate 200mm square
- Mirror polished
- Gas spring assist
- Bearing weight 25kg
- Fit a table slider

CODE: SADJT

Stainless Electrical Table Pedestal



The Stainless Electric Table Pedestal comes complete with control box which can run up to 4 pedestals in sync. The system can be customised to your requirements.

Key Points:

- 316 Stainless
- Tube sizes 127/100mm 150/127mm
- Extended height 700mm
- Lowered height 400mm
- Travel 300mm
- Top plate 200mm square
- Mirror polished
- Activation via remote control or push button
- Bearing weight 80kg
- Fit a table slider
- Note: requires a cavity below the floor of 100mm to allow for the installation of the motor.

CODE: SADJ10E



Customised Stainless Electric Table Pedestal

The Customised Stainless Steel Electric Table has up to 400mm of travel with a 200kg load. It comes complete with control box which can run up to 4 pedestals in sync. The system can be customised to your requirements.

Key Points:

- Tube sizes 250/200mm
- Extended height 700mm
- Lowered height 400mm
- Travel 400mm
- Top plate 300mm square
- Mirror polished
- Activation via remote control or push button
- Bearing weight 200kg
- Fit a table slider
- Sealed for outdoor use.

CODE: SADJE



Aluminium Electric Table Pedestal

Enjoy the weight savings of an aluminium option and have it finished in your favourite colour. Its elliptical design allows you to position it for a wide or narrow look it also adds to its ability to support your table.

Key Points:

- Extended height 740mm
- Lowered height 440mm
- Travel 300mm
- Marine grade aluminium
- Anodised and Nickel plated
- Fit a table slider
- Many colour options
- Bearing weight 80kg
- Also available as a fixed and triple stage pedestal

CODE: AADJE1

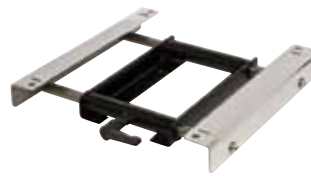


Table Slider for all Table Pedestals

The Table Slider is adjustable and has 300mm of travel. This slider is lockable in any position. The slider fits the full range of fixed and adjustable stainless table pedestals.

Key Points:

- Travel 300mm
- Width 390mm
- Mirror polished
- Bearing weight 45kg

CODE: STS300



Hercules TV Lifter

The TV Lift is manufactured to the highest quality. The system can be customised to suit your needs with push button or remote control operation.

Key Points:

- Extended height 1250mm
- Lowered height 580mm
- Travel 670mm
- Powder coated and brushed
- Activation via remote control or push button
- Bearing weight 45kg

CODE: MTIA-TVLI



Marine Tech Industries Australia Pty Ltd

Marine Tech Industries offer the boating world an extensive range of top quality pedestals, seating and table systems. 'When at sea quality & performance count'. We have combined the latest technology and materials to bring you a product range that leads the way in Stability, Durability, Comfort and Style.

Proudly Australian Owned. Servicing the World.



Distributed by

Factory 3, 209 Liverpool Road Kilsyth, Victoria, Australia 3137
Tel: 1300 300 089 International: +61 (3) 9761 9322
Email: sales@marinetechindustries.com
www.marinetechindustries.com.au